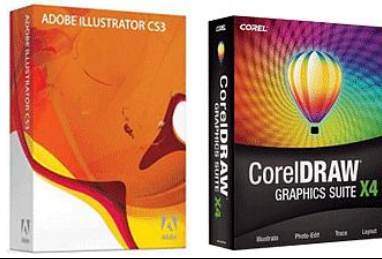


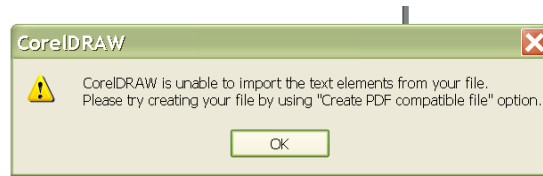
If You don't have Adobe Illustrator to open an .ai file



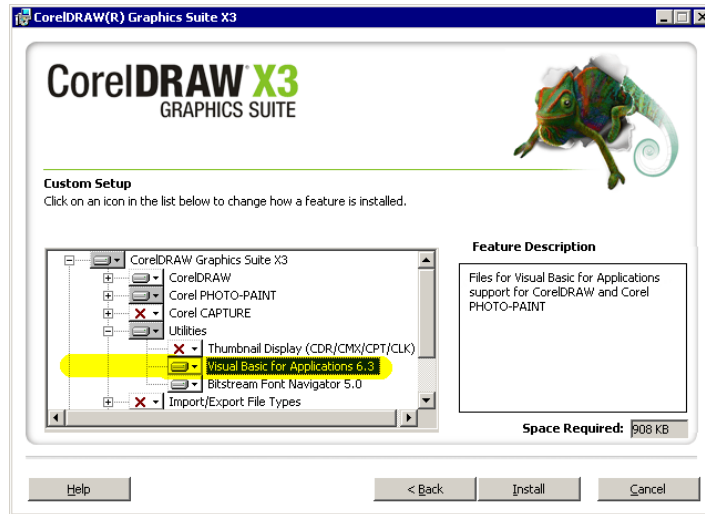
Quick tutorial.

Many designers are expert in both application. But I think there is much more people deal only occasionally and not professional with CorelDraw.

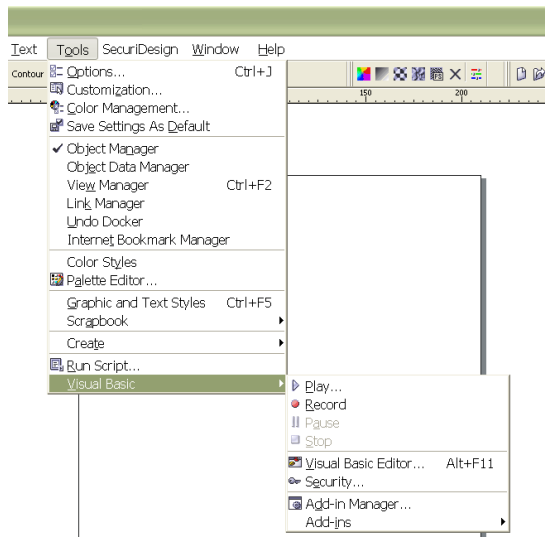
It doesn't matter because many tasks can be performed only some knowledge of the command. Often you find the desirable vector graphics just in Illustrator Ai and / or PDF extension can be achieved. In this case, majority of people choice of PDF extension, because they are able to deal with Corel Draw. In the best possible case you lost only the structure of the layers other times you get the error message:



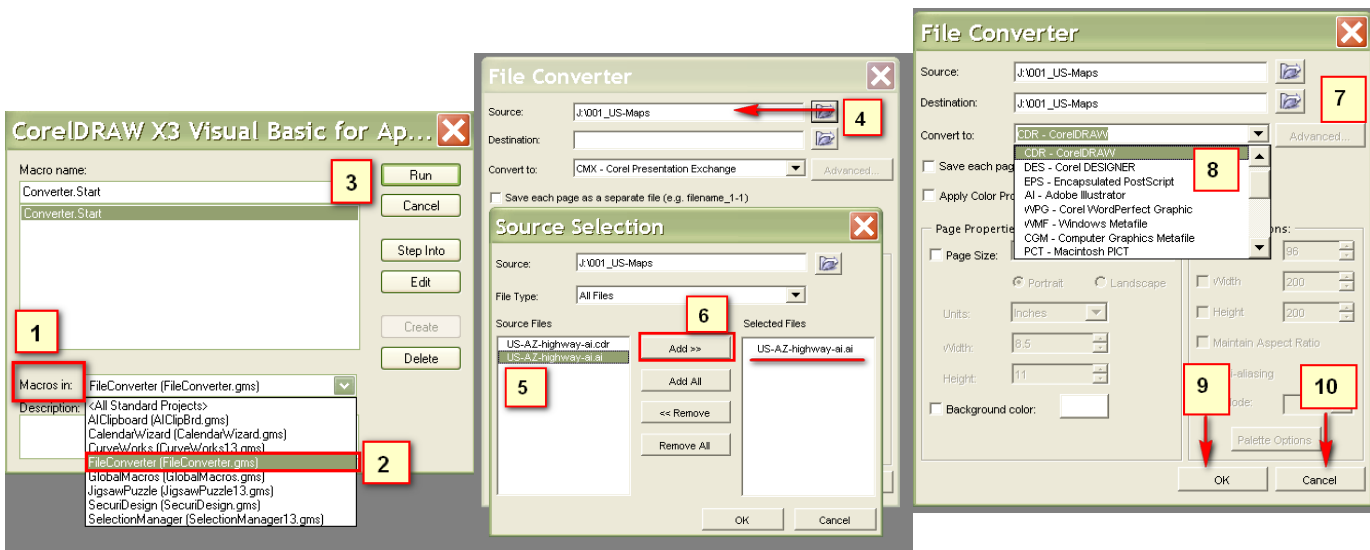
What to do in such cases the average user? I Can safely recommend: choose file with extension .ai, because it can be open in Corel Draw as well, provided that the installation was complete and you didn't forget the installation of Utilities.



Whether you have or not it is easy to check, if you open CorelDraw and then from the Tools / Visual Basic / menu item you see the following illustration:

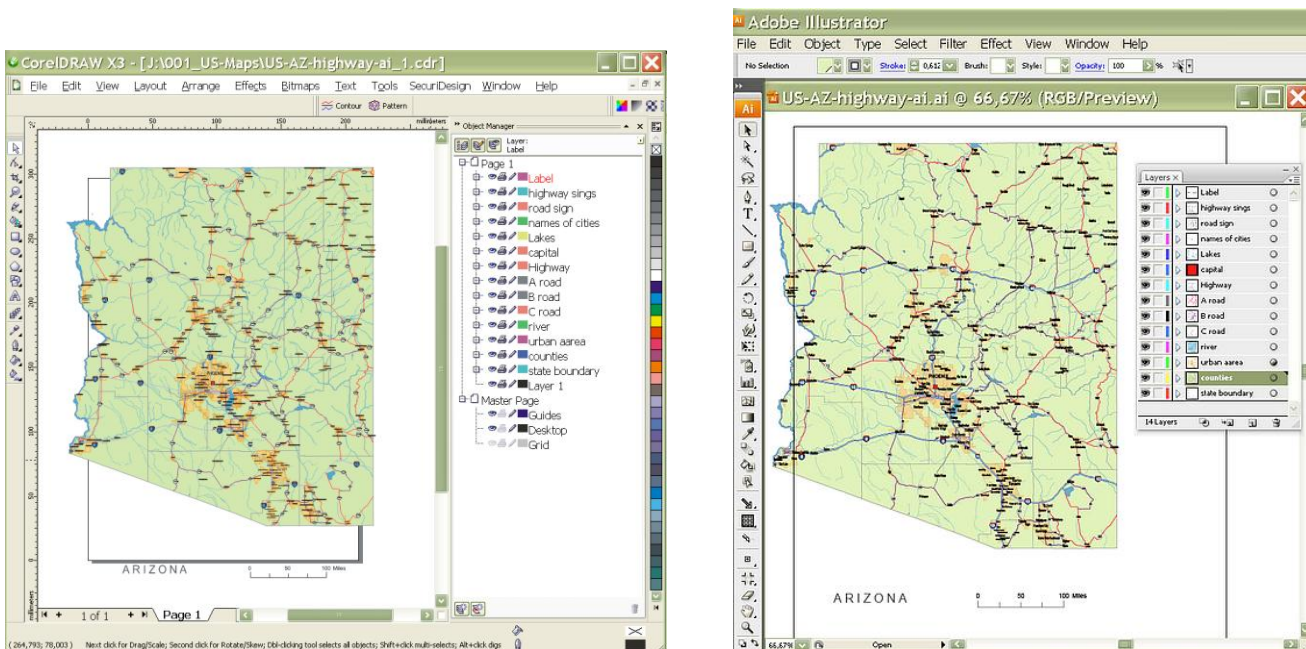


So, open Corel Draw, and then select the Tools / Visual Basic / Play / menu. Then follow the steps according to the pictures.



Finally after transform processing is complete select 'Cancel' otherwise the processing will repeat. That's voila. I attached a sample file. I have made in Adobe Illustrator CS3, saved in CS form and converted it in Corel X3.

I successfully preserved the layers structure too.



Tags: ai file in CorelDraw, preserve layers in CorelDraw, ai file keep layers in CorelDraw, Illustrator to CorelDraw, hold ai layers in CorelDraw, convert Ai file to cdr,